



OLLY MOSS ILLUSTRATOR

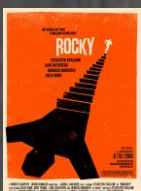
Olly Moss was born in Winchester, England. His real name is Oliver Johnathan. His day job is working on his commissioned, unique movie posters. He studied English literature at Birmingham University. During this time, he illustrated as a hobby. He received a lot of praise and attention when he started posting his work online. Moss started to receive commissions. He created popular t-shirt designs that helped him financially while in University.

Moss started to become very popular, he began receiving commissions from places such as Empire, Marvel Studios and gaming companies.

What I think is interesting and different about his work is that it has a certain unique look which is commonly a distinctive object or character in the foreground then a plain background. He uses this formula to craft each poster but interestingly they are all impressively different. He uses different perspectives for example in the movie poster for movie My Neighbor Totoro, he incorporates the movies setting (mountain ranges) with the character. He illustrates a hill to act as the characters head and positions the trees to act as it's ears.

In all his movie posters it's the same, one colour background and then an outline of a character or object as a canvas. In the outline he illustrates a more complex scene usually consisting of a scene from the movie. The distinctive shapes of the character are cleverly replaced by scenery from the film. For example, the highly memorable T shape from Boba Fett's helmet is replaced by coincidentally T shaped ship, named 'Slave 1'.

The colour schemes of most his work seems to be quiet, dulled down colours. First the backgrounds are usually plain, normally a black, white or cream. Then the main object or character is a vibrant colour slightly dulled down. The colours used are warm and feel inviting and attractive to a viewer. He may use a few different variations of a colour, but other than that he doesn't really use much. I believe therefore he uses these colours, to makes the posters satisfying to look at. His use of tone is mainly on the light side. He doesn't use harsh dark tones as this wouldn't fit in with the vibrant dulled down main colour.

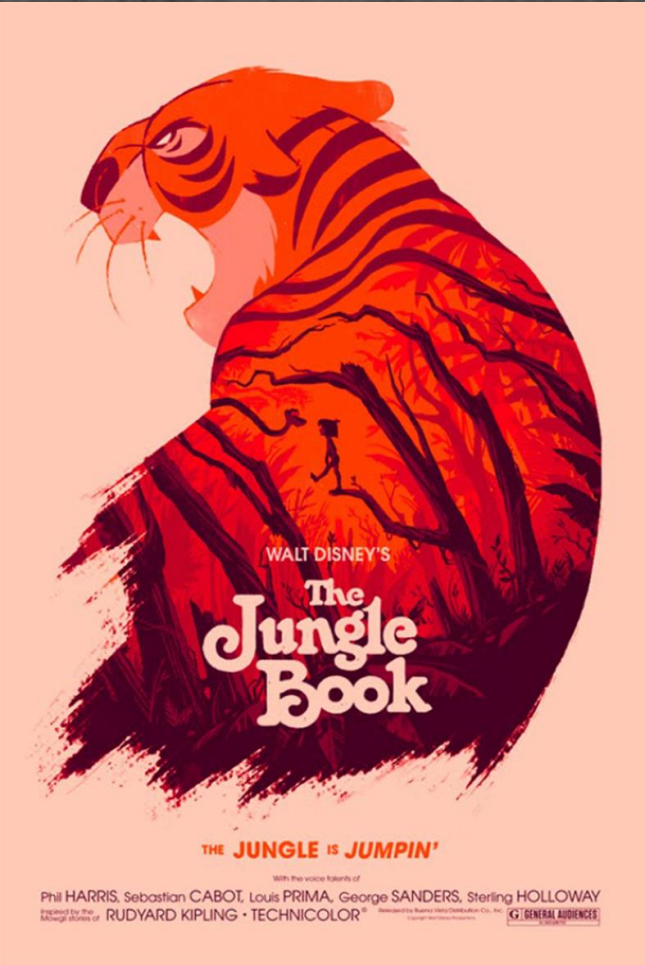


I think the artists creates this artwork by firstly choosing the character or object from the chosen media, then identifying the most recognisable shapes. Then collects scenes from throughout the film and goes through the process of what will match up best with his chosen shapes. For example, in the Jungle Book poster, Shere Khan's stripes are replaced by trees to recreate the scene where character Mowgli is being hypnotised by the snake, Kaa.

The posters chosen colour scheme and scene determines the mood created. For example, the BB8 poster created for Star Wars the Force Awakens has a tense mood due to fight scene taking place in a dark forest.

What I like about Olly Moss' work is simplistic yet complex because of the well-designed incorporation of the highly detailed scene inside the simple shape. Another thing I like about hi work is his use of fonts. The reason I like it is because he uses a simplified version of the font used from the original poster. Giving the poster an original feel yet still authentic to the franchise.

Moss' art work is amazing and I would like to try and create a movie poster in his unique style. I would love to experiment with pastel and dulled down versions of vibrant colours like he does and try to create something



think what stands out the most is in the poster, in the character is the scene displayed inside that is cleverly incorporated into the characters original design. I believe this as when a fan of the movie or show looks at the scene and recognises it, it gives them a feeling of satisfaction and achievement as others may not recognise it.



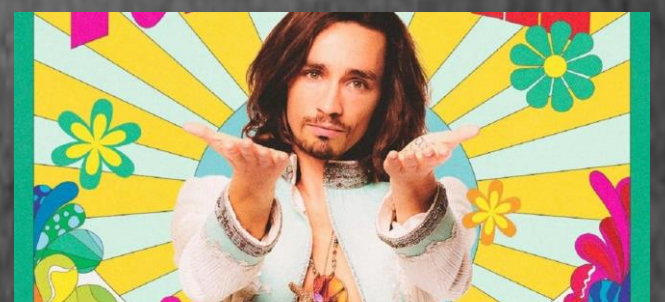
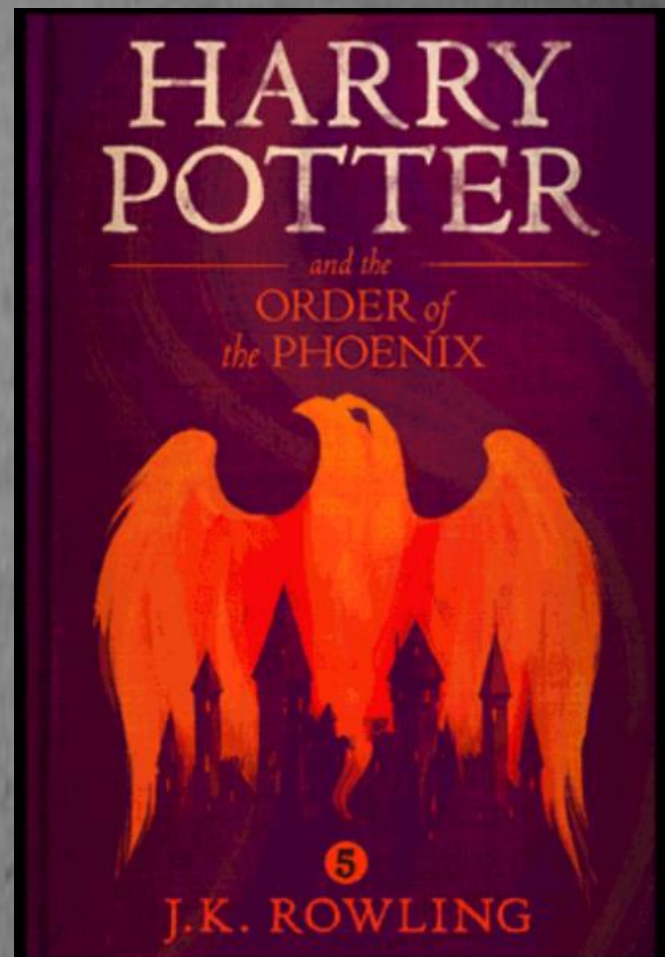
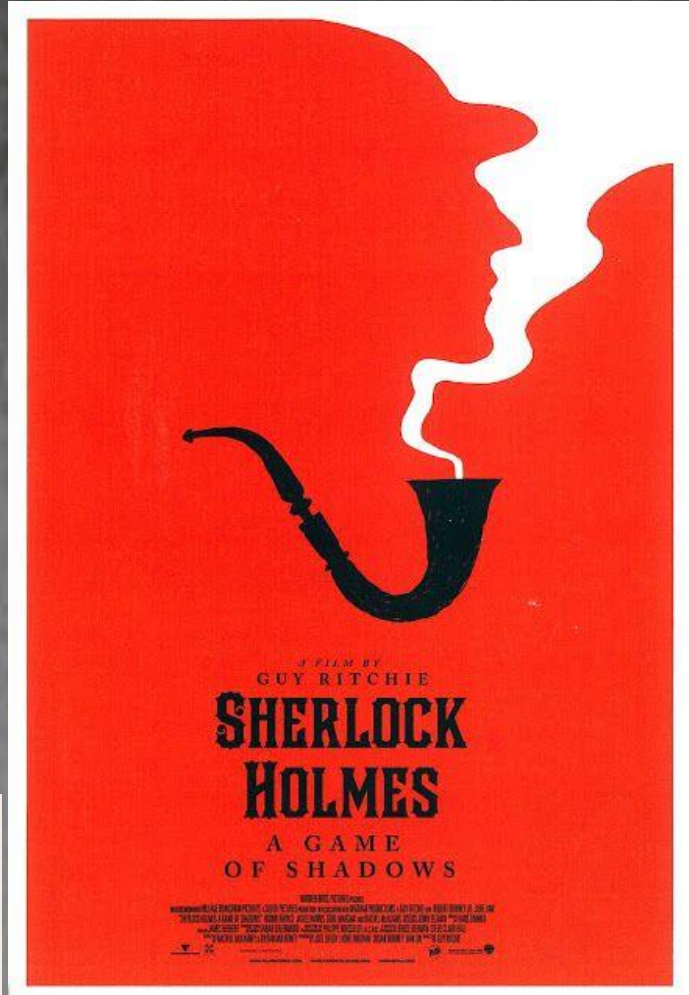
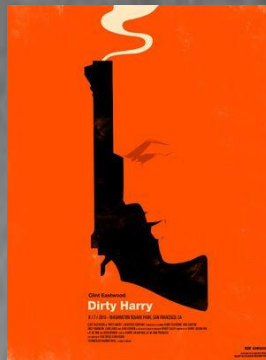
POSITIVE AND NEGATIVE SPACE

Positive and negative space, the positive is supposed to be the main focus of the picture and the negative is supposed to be the background, and is not supposed to be seen artists often use this to mislead people looking at it e.g., by having a pipe with stem coming out as the positive and the negative being someone's face.

Olly Moss was inspired by negative and positive space in his Harry Potter book covers. An example is where he incorporated the phoenix's shape into the outline of Hogwarts.

MY OWN DESIGN PLAN

What I would do in my own design is choose the best-looking picture of Klaus. Then think about the identifiable shapes of Klaus like the dog tag he wears or his sunglasses. Next, I will get a scene from the show that has lots of building or skyscrapers then I will tilt the scene with building and try to angle is to it looks like his glasses, just like Moss did with the tiger stripes that merged into the trees of a forest. I will stick with the colours dark red and blue for inside the character and black or white behind his silhouette.





Design Inspired by Olly Moss

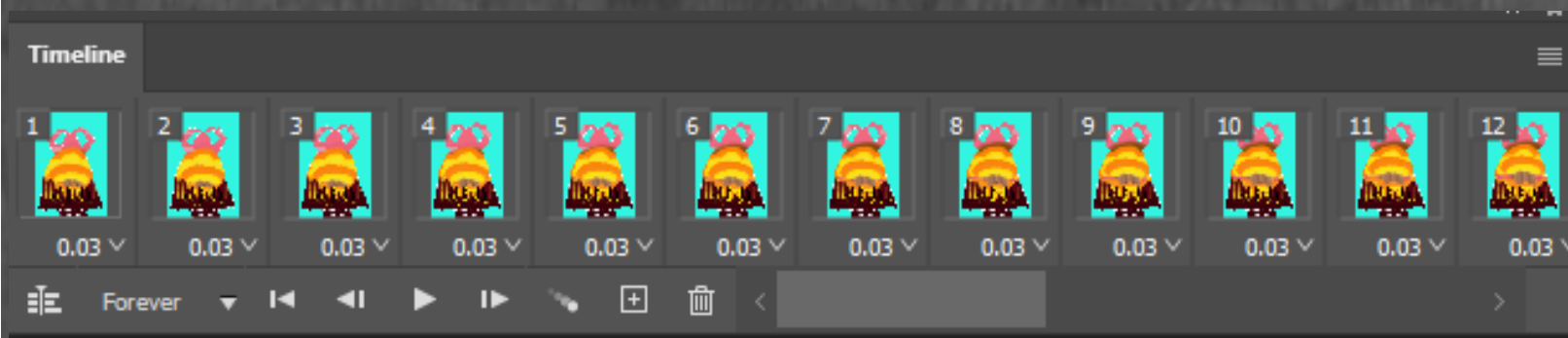
My Olly Moss inspired poster is of Klaus from the Umbrella Academy. The way I created my piece of work was, first I drew the outline of the picture of Klaus I wanted, then I chose an iconic scene from the series, I chose they part just before they all die. The way I recreated the scene was drawing around what I thought was distinctive layers. The first one was the silhouette of all the characters standing in front of the explosion. The second layer was the road. The third layer was the rubble on the ground. The fourth layer was the buildings on side. Finally, the fifth and sixth layer was the explosion and sky, (the different segments of explosion was 4 different layers, which later I merged.) after I drew them, I coloured them using different tones of red, except from the background I used blue for that. Then finally I added finishing touches like the white outline of the silhouette and the glow effect on the characters.

The different tools I used in Photoshop were, Polygonal lasso tool, the brush, the eraser and the paint bucket. What I like about my work is the colour scheme I went with; I like it because it sets the scene of the poster, it's all-red which indicated blood and death and that's what I want because this poster is set in the apocalypse. The difficulties I had when making this poster was the shading. It was difficult because, after drawing and colouring it I had to lasso around it, then find the right type of brush, then try to make it look realistic and I had to do that with all the buildings and characters.

What I would do to further develop my poster is; I couldn't think of a way to incorporate a defining feature of my silhouette in the scene. What I mean is, in Olly Moss's jungle book poster where Khan's stripes are the trees in the scene that is something I wanted to do but I couldn't think of a way to do it without making the scene



UMBRELLA ACADEMY

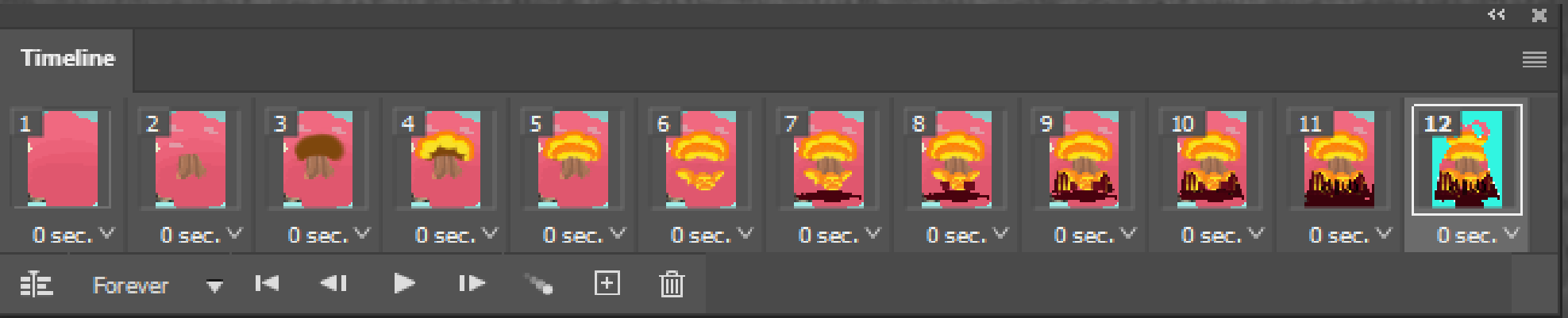


Olly Moss Inspired Animated Poster

I made this animation in photoshop with the timeline tool. The reason I used photoshop and not adobe animate is because I have not learned how to use it yet and it's hard to import a photoshop picture with all the layers without something going wrong. In this little animation I made the mushroom cloud blow everything up like in the actual scene from the show .



Ollly Moss Inspired Animated Poster



This short animaton shows the prosses of how I made the Ollly Moss insipred poster I made. I made it iin Photoshop by bringing up the timeline then selecting frame animaton. After I did that one each frame, I revealed each layer of the poster one by one.

